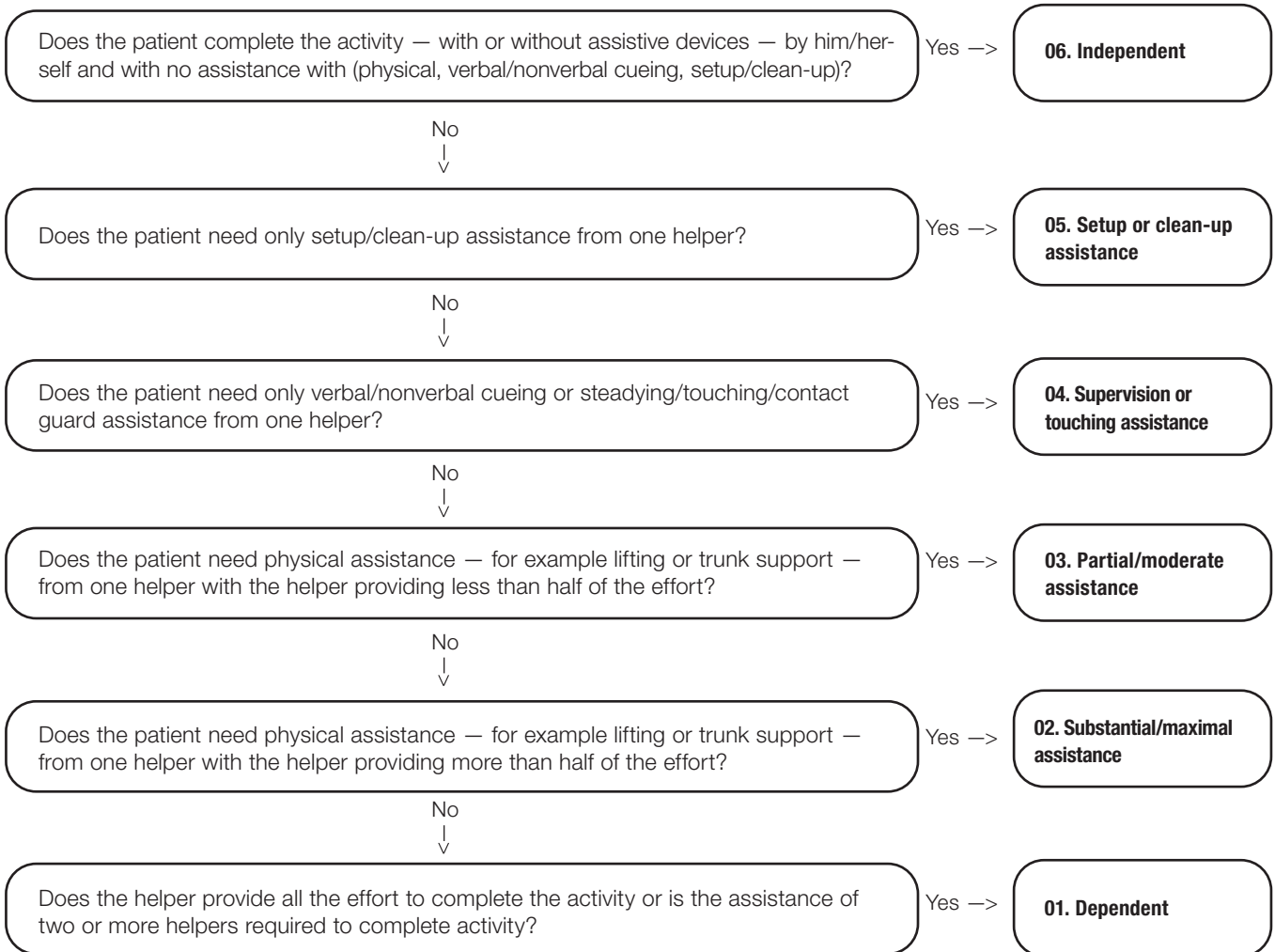




Decision Tree

Use this decision tree provided by CMS to code the patient’s performance on the OASIS. If helper assistance is required because the patient’s performance is unsafe or of poor quality, score according to the amount of assistance provided (See related story, p. 1). Only use the “activity not attempted codes” if the activity did not occur; that is, the patient did not perform the activity and a helper did not perform that activity for the patient.

Start decision tree here





Coding section GG self-care & mobility activities: Key considerations

Section GG (Functional abilities and goals) includes admission and discharge GG0130 (Self-care) and GG0170 (Mobility) performance data elements. CMS provided the following guidance and decision tree for clinicians using the 6-level rating scale to reflect the patient's functional abilities based on the type and amount of assistance provided by a helper.

The 6-point scale coding

Safety and quality of performance - If helper assistance is required because patient's performance is unsafe or of poor quality, score according to amount of assistance provided. Activities may be completed with or without assistive devices.

- 06. Independent** — Patient safely completes the activity by him/herself with no assistance from a helper.
- 05. Setup or clean-up assistance** — Helper sets up or cleans up; patient completes activity. Helper assists only prior to or following the activity.
- 04. Supervision or touching assistance** — Helper provides verbal cues and/or touching/steadying and/or contact guard assistance as patient completes activity. Assistance may be provided throughout the activity or intermittently.
- 03. Partial/moderate assistance** — Helper does less than half the effort. Helper lifts, holds or supports trunk or limbs, but provides less than half the effort.
- 02. Substantial/maximal assistance** — Helper does more than half the effort. Helper lifts or holds trunk or limbs and provides more than half the effort.
- 01. Dependent** — Helper does all of the effort. Patient does none of the effort to complete the activity. Or, the assistance of two or more helpers is required for the patient to complete the activity.

Activity not attempted codes

If the patient did not perform the activity and a helper did not perform the activity for the patient/resident during the assessment period, one of four “activity not attempted codes” is used.

- 07. Patient refused**
- 09. Not applicable** — Not attempted and the patient did not perform this activity prior to the current illness, exacerbation, or injury.
- 10. Not attempted due to environmental limitations** (e.g., lack of equipment, weather constraints)
- 88. Not attempted due to medical condition or safety concerns**