

Home Health Line Tool

Planned updates to HHQRP falls measure

CMS is planning a significant update to the Falls with Major Injury quality measure. Final details on timing for the new measure have not been released, but CMS has outlined the basic formula for determining results.

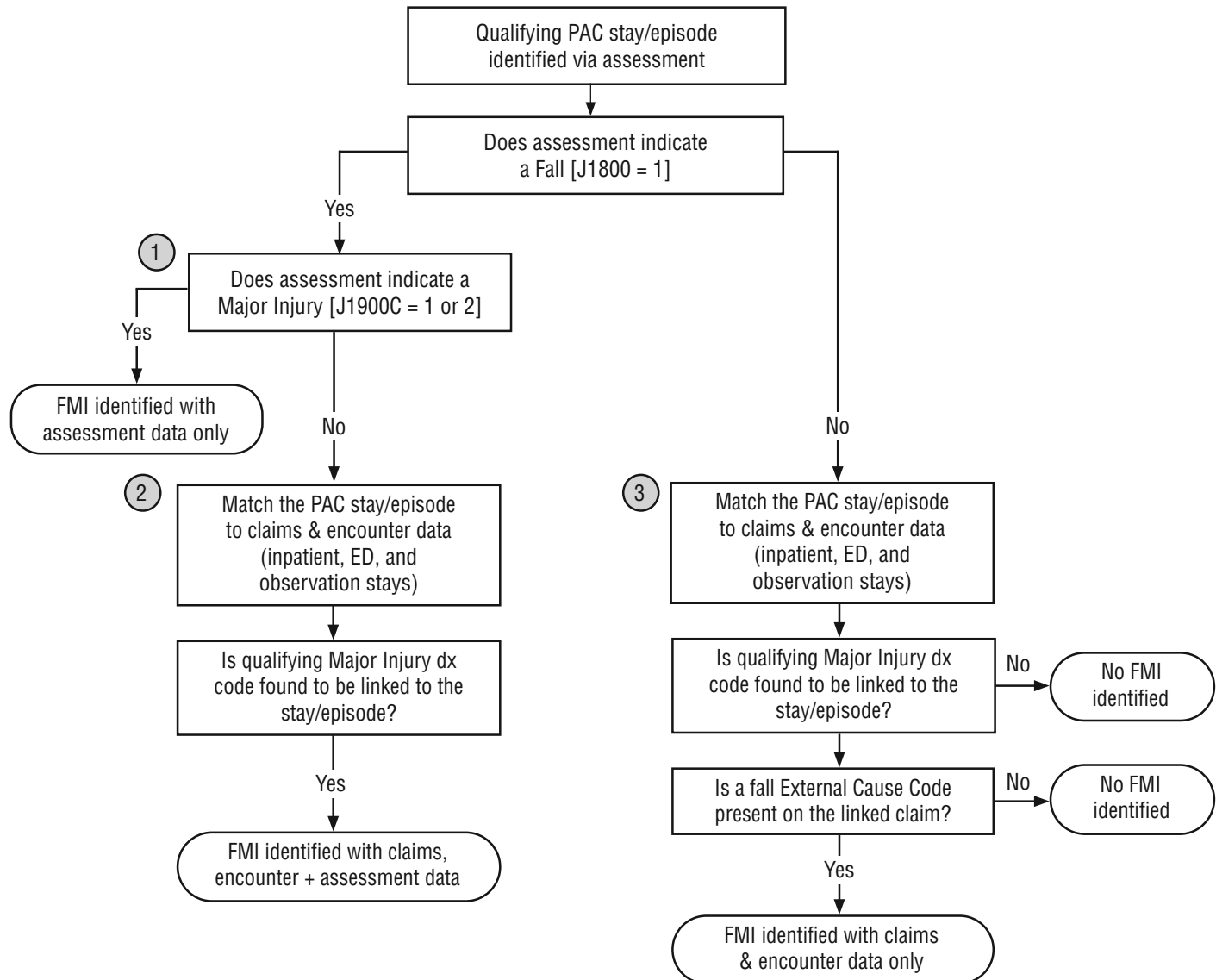
Agencies can expect to see more falls included with this measure due to these changes. (See story, p. 3.)

Step 1. The measure starts with the current specifications. In the past 12-month period, the percentage of quality episodes with J1800 (Any falls since SOC/ROC) reflecting a response of “1 — Yes” and J1900C reflecting a response of “1 — One” or “2 — Two or more.”

Step 2. CMS will then focus on OASIS assessments that identify a fall under J1800, but no major injury under J1900C.

CMS will review claims from hospitals, emergency departments and observation stays during these home health periods, searching for ICD-10 diagnosis codes that reflect particular injuries related to falls. For example, a traumatic bone fracture or joint dislocation.

Step 3. They'll review all claims with a major injury where no fall was identified under J1800, looking for an external cause code on the claim. Since this is a voluntary field, only those claims with an external cause code indicating the injury was due to a fall will be included as a fall with major injury for this measure.



Source: CMS Falls with Major Injury Home Health Technical Specification Report